

International Association Of Certified Practicing Engineers	 INTERNATIONAL ASSOCIATION OF CERTIFIED PRACTICING ENGINEERS www.iacpe.com	Page : 1 of 84
		Rev: 01
		Rev. 01- July 2014
IACPE No 19, Jalan Bilal Mahmood 80100 Johor Bahru Malaysia	PROJECT MANAGEMENT CPE LEVEL II TRAINING MODULE	

The International Association of Certified Practicing Engineers is providing the introduction to the Training Module for your review.

We believe you should consider joining our Association and becoming a Certified Practicing Engineer. This would be a great option for engineering improvement, certification and networking.

This would help your career by

1. Providing a standard of professional competence in the practicing engineering and management field
2. Identify and recognize those individuals who, by studying and passing an examination, meets the standards of the organization
3. Encourage practicing engineers and management professionals to participate in a continuing program of personal and professional development

www.IACPE.com

International Association Of Certified Practicing Engineers	PROJECT MANAGEMENT CPE TRAINING MODULE	Page 2 of 84
		Rev: 01
		July, 2014

TABLE OF CONTENTS

INTRODUCTION	6
Scope	6
General Consideration	9
The Project Life Cycle	10
Project Management Process	11
The Project Management Knowledge Areas	12
Project Types	14
DEFINITIONS	15
THEORY	17
I. Project Management Processes	17
A. Initiating	17
B. Planning	18
C. Executing	19
D. Controlling	20
E. Closing	21
II. Steps Project Management Process	22
Step 1: Define the Work	23
Step 2 : Build the Workplan	27
1. Gather Pre-existing Baseline Documents	27

International Association Of Certified Practicing Engineers	PROJECT MANAGEMENT CPE TRAINING MODULE	Page 3 of 84
		Rev: 01
		July, 2014

2. Create a Work Breakdown Structure	27
3. Estimate	29
4. Create Project-Scheduling Models	30
5. Assign Resources	36
6. Adjust Plan and Add Milestones	37
Step 3 : Manage the Workplan	38
Step 4 : Management issue	40
Step 5 : Manage scope	45
a. Scope Change Management	45
Step 6 : Manage Communication	46
a. Status Reports	46
b. Status meeting	47
c. Communication plan	47
d. Manage expectations	48
Step 7 : Manage Risks	49
a. Processes of project risk management	49
1. Risk identification	49
2. Risk analysis	51
3. Risk Responses	52
Step 8 : Manage Documents	53

International Association Of Certified Practicing Engineers	PROJECT MANAGEMENT CPE TRAINING MODULE	Page 4 of 84
		Rev: 01
		July, 2014

a. Basics documents management	54
b. Advance documents management	55
Step 9 : Manage quality	56
a) Processes of project quality management	57
i. Quality Planning	57
ii. Quality Control	58
iii. Quality Assurance	58
b) Measuring Quality	59
Step 10 : Manage metrics	59
a. Types of Metrics	59
b. Creating Balanced Scorecard	62
c. Earned Value	62
III. Other steps for considering energy course	64
A. Technical Design	64
B. Financing	64
C. Implementation Plan for Top Management	65
a. Planning Budget	65
b. Procurement Procedures	66
c. Construction	66
d. Measurement & Verification (M&V)	66

International Association Of Certified Practicing Engineers	PROJECT MANAGEMENT CPE TRAINING MODULE	Page 5 of 84
		Rev: 01
		July, 2014

IV. Development of a Project	66
1. Up to the Award of the Contract	67
A. Preliminary studies	67
B. Basic Design Package	68
C. Front-End Engineering Design Package (FEED)	68
D. Instructions to Bidders (ITB)	69
E. Proposal	70
F. Award	70
2. Up to the Mechanical Completion of the Plant	70
3. Start-up and Operation	71
V. Strategies of a Project	74
A. Contracting	74
i. Contracting options	75
ii. Contracting Categories	76
iii. Contracting Considerations	77
B. Cost of Industrial Plants (HPI / CPI)	78
C. Procurement	79
REFERENCES	83

International Association Of Certified Practicing Engineers	PROJECT MANAGEMENT CPE TRAINING MODULE	Page 6 of 84
		Rev: 01
		July, 2014

LIST OF TABLE

Table 1: Similarities and Differences of Project Types	14
Table 2: Assumption and Risks Concept	24
Table 3: Organizational Structures	25
Table 4: Gantt Chart	31
Table 5: Example of Issue Log	41
Table 6: Example of Identification Data Result	44
Table 7: Characteristics Between High Risk and Low Risk	50
Table 8: Risk Event Based on Probability and Impact	51
Table 9: Risk Responses Based on Impact and Likelihood	53
Table 10: Structured and Unstructured Data	54
Table 11: Additional Workplan Activities	56
Table 12: Description Between Class IV and Class II	69

LIST OF FIGURE

Figure 1: Relationship of Project Management to Other Management Disciplines	9
Figure 2 : Construction project life cycle	10
Figure 3 : Project management process	11
Figure 4 : Overlap of Process Groups in a Phase	12
Figure 5 : The project management knowledge areas	13
Figure 6: Planning process group activities	19
Figure 7 : Executing processes	20

International Association Of Certified Practicing Engineers	PROJECT MANAGEMENT CPE TRAINING MODULE	Page 7 of 84
		Rev: 01
		July, 2014

Figure 8 : Steps Project Management Process	22
Figure 9 : Sizes based on complexity of the project	22
Figure 10: Sample of WBS based on deliverables	28
Figure 11: Network diagram	31
Figure 12 : The understanding of forward and backward pass for one task	33
Figure 13 : The determining of float	34
Figure 14: PERT diagram	35
Figure 15 : Issue management process	41
Figure 16 : Fishbone diagram	43
Figure 17 : Key values in earned value	63
Figure 18 : Turnover flowchart	73

International Association Of Certified Practicing Engineers	PROJECT MANAGEMENT CPE TRAINING MODULE	Page 8 of 84
		Rev: 01
		July, 2014

INTRODUCTION

Scope

Project management is the application of knowledge, skills, tools, and techniques for project activities in order to meet or exceed stakeholder needs and expectations in a project. A project is a temporary endeavor undertaken to create a unique product or service that is different in some distinguishing way from all similar products or services. Energy conservation projects and process improvement efforts that result in better business processes or more efficient operations can be defined as projects. Projects usually include constraints and risks regarding cost, schedule or performance outcomes.

Many efforts are called “projects” but actually become programs as they extend indefinitely and cover broader, less specific business objectives. Projects must have a clear, definitive goal or objective. The objective is specific, identifiable, and can be accomplished. A project usually involves varied activities, which produce quantifiable and qualifiable deliverables that when added together, accomplish the overall objective.

Projects have become the new way of accomplishing and managing business activities. Projects are the temporary assemblage of key personnel designed to accomplish specific business objectives with identifiable customers in mind. A project has a beginning and an end. The project team dissolves once the objectives are met. It is fluid and driven by the specific needs of that business. The project approach to managing business activities embraces change and complexity.

Project management includes developing a project plan, which includes defining and confirming the project goals and objectives, identifying tasks and how goals will be achieved, quantifying the resources needed, and determining budgets and timelines for completion. It also includes managing the implementation of the project plan, along with operating regular controls to ensure that there is accurate and objective information on performance relative to the plan, and the mechanisms to implement recovery actions where necessary.

This training module presents the steps for managing projects using basic tools needed for success. These steps should be modified for each individual project as it applies to the given effort. These steps provide a methodical approach to conducting projects so that they meet the needs of the project sponsors successfully and consistently.

International Association Of Certified Practicing Engineers	PROJECT MANAGEMENT CPE TRAINING MODULE	Page 9 of 84
		Rev: 01
		July, 2014

This training module covers how to guide a project manager through the corporate project management methodology. The project life cycle consists of five major phases: Initiating, Planning, Executing, Controlling, and Closing. It assists engineers to understand the basic project management. In addition, this training module consist of the development of project, implementation plan for top management, strategies of a project, etc.

The training module is also useful in directing a project manager to have the skills in forming, leading and facilitating a group. There are methods of how to lead a team and people in a project, how to solve problems when a project has an imposed delivery deadline from the sponsor that is not realistic based on the estimates, and how to carry on risks in a project, along with other skills which should be owned by a project manager.

International Association Of Certified Practicing Engineers	PROJECT MANAGEMENT	Page 10 of 84
	CPE TRAINING MODULE	Rev: 01
		July, 2014

INTRODUCTION

General Consideration

Projects and project management operate in an environment broader than that of the project itself. The project management team must understand how to manage the day-to-day activities of the project successfully. The following explanations are a set of step by step instructions that outline and detail how to accomplish a desired goal.

The Project Life Cycle

Because projects are unique undertakings, they involve a degree of uncertainty. Organizations performing projects will usually divide each project into several project phases to provide better management control and appropriate links to the ongoing operations of the performing organization. Collectively, the project phases are known as the project life cycle. The following figure is a construction project life cycle with its description as illustrated in figure 2.

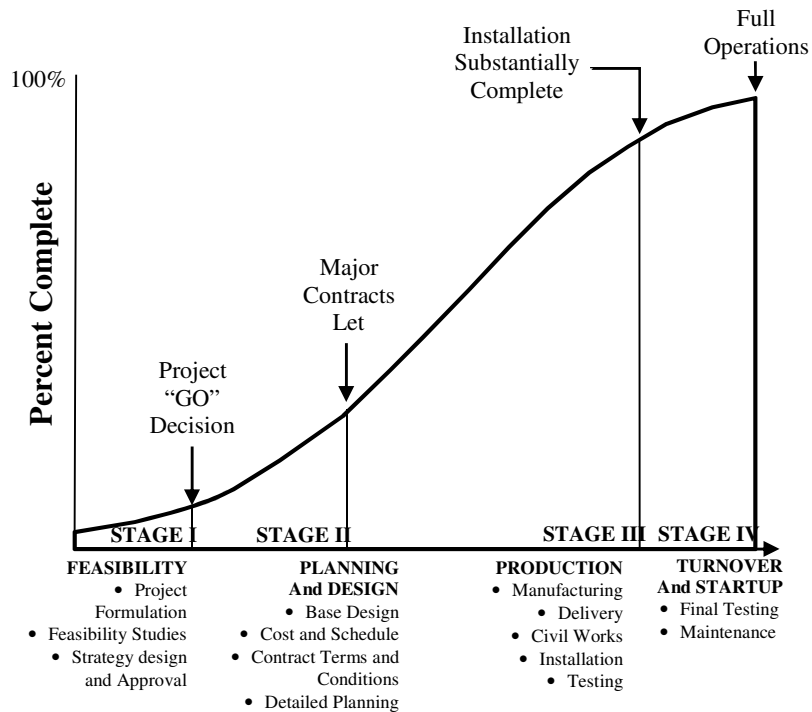


Figure 2 : construction project life cycle

International Association Of Certified Practicing Engineers	PROJECT MANAGEMENT CPE TRAINING MODULE	Page 11 of 84
		Rev: 01
		July, 2014

Project Management Process

Projects are composed of processes that bring about a result. Project management processes can be organized into five groups of one or more processes. The process groups are linked by the results outcome of one becomes an input to another. These connections are illustrated in figure 3.

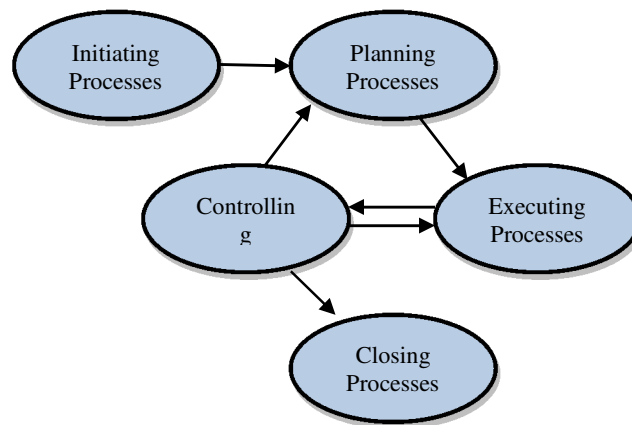


Figure 3 : project management process

Each of groups can be defined as follows :

1. Initiating processes, purpose for recognizing that a project or phase should begin and committing to do so.
2. Planning processes, purpose for devising and maintaining a workable scheme to accomplish the business need that the project was undertaken to address.
3. Executing processes, purpose for coordinating people and other resources to carry out the plan.
4. Controlling processes, purpose for ensuring that project objectives are met by monitoring and measuring progress and taking corrective action when necessary.
5. Closing processes, purpose for formalizing acceptance of the project or phase and bringing it to an orderly end.

International Association Of Certified Practicing Engineers	PROJECT MANAGEMENT CPE TRAINING MODULE	Page 12 of 84
		Rev: 01
		July, 2014

The project management process groups are not discrete, one-time events; they are overlapping activities which occur at varying levels of intensity throughout each phase of the project as shown in figure 4.

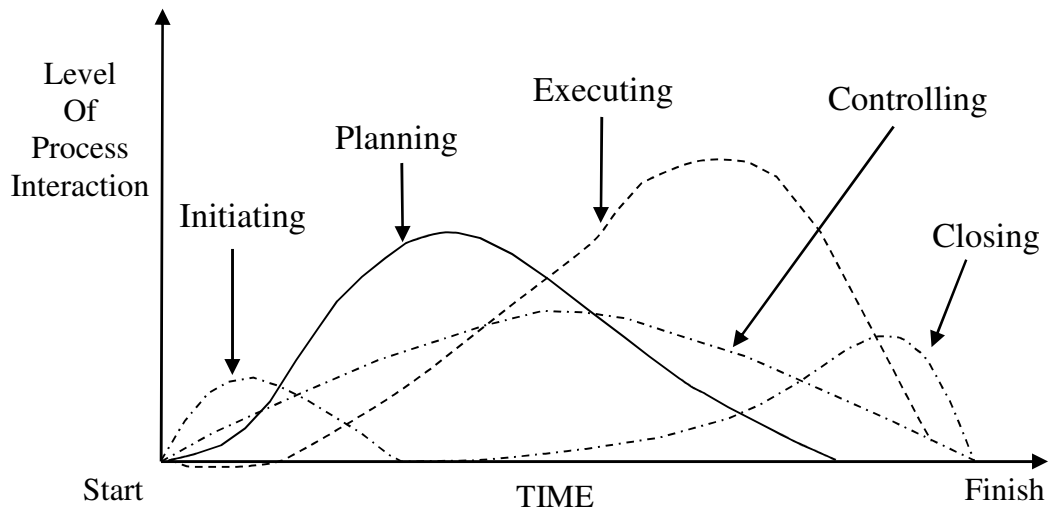


Figure 4 : Overlap of Process Groups in a Phase

International Association Of Certified Practicing Engineers	PROJECT MANAGEMENT CPE TRAINING MODULE	Page 13 of 84
		Rev: 01
		July, 2014

The Project Management Knowledge Areas

The Project Management Knowledge Areas, describes project management knowledge and practice in terms of its component processes. These processes have been organized into nine knowledge areas as described below and as illustrated in figure 5.

1. Project Integration Management, describes the processes required to ensure that the various elements of the project are properly coordinated.
2. Project Scope Management, describes the processes required to ensure that the project includes all the work required, and only the work required, to complete the project successfully.
3. Project Time Management, describes the processes required to ensure timely completion of the project.
4. Project Cost Management, describes the processes required to ensure that the project is completed within the approved budget.
5. Project Quality Management, describes the processes required to ensure that the project will satisfy the needs for which it was undertaken.
6. Project Human Resource Management, describes the processes required to make the most effective use of the people involved with the project.
7. Project Communications Management, describes the processes required to ensure timely and appropriate generation, collection, dissemination, storage, and ultimate disposition of project information.
8. Project Risk Management, describes the processes concerned with identifying, analyzing, and responding to project risk.
9. Project Procurement Management, describes the processes required to acquire goods and services from outside the performing organization.

International Association Of Certified Practicing Engineers	PROJECT MANAGEMENT CPE TRAINING MODULE	Page 14 of 84
		Rev: 01
		July, 2014

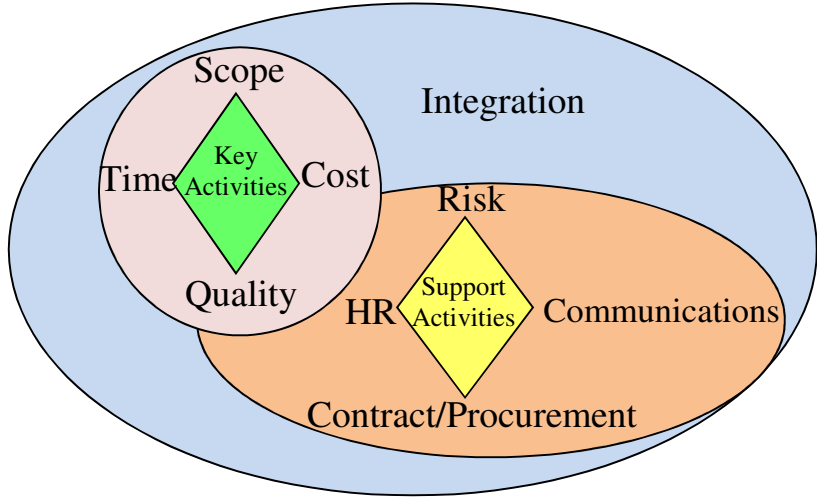


Figure 5 : the project management knowledge areas

International Association Of Certified Practicing Engineers	PROJECT MANAGEMENT CPE TRAINING MODULE	Page 15 of 84
		Rev: 01
		July, 2014

Project Types

In general, there are two types of projects: small and standard. The two types differ in terms of complexity, duration, scope, funding, deliverables, and risk^[5]. The following table is similarities and differences between the two project types.

Table 1: similarities and differences of project types

	Standard Project	Small Project
Common Characteristics	An effort to meet specific objectives : <ul style="list-style-type: none"> • It solves a technical problem, provides a service, builds a product, implements a plan of action, or involves other unique efforts. • It has its funding • It has a defined starting point, defined objectives, and defined delivery schedule. 	
Distinguishing Characteristics	Complex	Straightforward
	Long	Short
	Broad scope	Narrow scope
	Costs more than \$ 300,000	Costs less than \$ 300,000
	New or unknown technologies	No new or unknown technologies
	Deliverables with multiple interdependencies	Deliverables with few interdependencies
	High level of potential risks	Low level of potential risks
Best Practice Expectations	Project follows basic best practices in this guide and tailors the Project Management Plan Template	

International Association Of Certified Practicing Engineers	PROJECT MANAGEMENT CPE TRAINING MODULE	Page 16 of 84
		Rev: 01
		July, 2014

DEFINITIONS

Closing - formalizing acceptance of the project or phase of work and bringing it to an orderly end.

Contract - a mutually binding agreement which obligates the seller to provide the specified product and obligates the buyer to pay for it.

Cost Variance (CV) - any difference between the estimated cost of an activity and the actual cost of that activity.

Critical Path Method (CPM) - a *network analysis* technique used to predict project duration by analyzing which sequence of activities (which *path*) has the least amount of scheduling flexibility (the least amount of *float*)

Deliverable - any measurable, tangible, verifiable outcome, result, or item that must be produced to complete a project or part of a project.

Detailed Schedule - a schedule used to communicate day-to-day activities to working levels on the project.

Duration - the total number of calendar days that it takes to complete a task

Earned Value (EV) - a method for measuring project performance. It compares the amount of work that was planned with what was actually accomplished to determine if cost and schedule performance is as planned.

Effort - total number of hours that will be expended on a task

Feasibility Studies - the methods and techniques used to examine technical and cost data to determine the economic potential and the practicality of project applications.

Float - the amount of time that an activity may be delayed from its early start without delaying the project finish date.

Forward Pass - the calculation of the early start and early finish dates for the uncompleted portions of all network activities.

International Association Of Certified Practicing Engineers	PROJECT MANAGEMENT CPE TRAINING MODULE	Page 17 of 84
		Rev: 01
		July, 2014

Milestone - a significant event in the project, usually completion of a major deliverable.

Quality Assurance (QA) - the process of evaluating overall project performance on a regular basis to provide confidence that the project will satisfy the relevant quality standards.

Quality Control (QC) - the process of monitoring specific project results to determine if they comply with relevant quality standards and identifying ways to eliminate causes of unsatisfactory performance.

Schedule Variance (SV) - any difference between the scheduled completion of an activity and the actual completion of that activity.

Scope - The work content and products of a project or component of a project. Scope is fully described by naming all activities performed, the resources consumed, and the resulting end products, including quality standards.

Solicitation - Obtaining quotations, bids, offers, or proposals as appropriate.

Sponsor - the individual or group within the performing organization

Planning - devising and maintaining a workable scheme to accomplish the business need for the project

Project Charter - The primary document used to state the project mission, goals and objectives consistent with approved business plans. It defines the business opportunity, contains the scope statement, and summarizes project impacts and estimates in relation to the business plan.

Project manager - person responsible for accomplishing the project objectives.

Work Breakdown Structure (WBS) - a deliverable-oriented grouping of project elements which organizes and defines the total scope of the project. Each descending level represents an increasingly detailed definition of a project component.

International Association Of Certified Practicing Engineers	PROJECT MANAGEMENT CPE TRAINING MODULE	Page 18 of 84
		Rev: 01
		July, 2014

THEORY

I. Project Management Processes

A. Initiating

At the start of any project, there will be a variety of ideas and opinions about the purpose and scope of the project, what the final product of the project will be, and how the project will be carried out. The project initiation is concerned with taking these ideas and intentions and developing them into a formal, planned, resourced and funded project.

In order to define a project in this way, it is first necessary to clearly and explicitly define what the project is intended to achieve and what its scope of interest will be. If this stage is not performed well, it is unlikely that the project will be successful in meeting the business's needs. Key project controls needed in this process are to understand of the business environment and make sure that all necessary controls are incorporated into the project. The initiation stage should include a cohesive plan that encompasses the following areas:

- a. Study analysing the business requirements in measurable goals
- b. Review of the current operations
- c. Conceptual design of the operation of the final product
- d. Equipment and contracting requirements including an assessment of long lead time items
- e. Financial analysis of the costs and benefits including a budget
- f. Stakeholder analysis, including users, and support personnel for the project
- g. Project charter including costs, tasks, deliverables, and schedule

In energy course, this stage is to identify components of the project. Projects may be identified both internally and externally^[3]:

- a. Internal identification takes place when the energy manager identifies a package of energy saving opportunities during the day-to-day energy management activities, or from facility audits.
- b. External identification of energy savings can occur through systematic energy audits undertaken by a reputable energy auditor or energy service company.

International Association Of Certified Practicing Engineers	PROJECT MANAGEMENT CPE TRAINING MODULE	Page 19 of 84
		Rev: 01
		July, 2014

In screening projects, the following criteria should be used to rank-order project opportunities.

- a. Cost-effectiveness of energy savings of complete package of measures (Internal rate of return, net present value, cash flow, average payback)
- b. Sustainability of the savings over the life of the equipment.
- c. Ease of quantifying, monitoring, and verifying electricity and fuel savings.
- d. Availability of technology, and ease of adaptability of the technology to Indian conditions.
- e. Other environmental and social cost benefits (such as reduction in local pollutants, e.g. SO_x).

B. Planning

The planning stage is considered the most important phase in project management. Project planning defines project activities that will be performed; the products that will be produced, and describes how these activities will be accomplished and managed. Planning involves identifying and documenting scope, tasks, schedules, cost, risk, quality, and staffing needs. A small project the planning as a small prototype may be relatively easy and short. Perhaps it is just validating the deliverables, creating a task list, understanding the client expectations and then start.

The result of the project planning, the project plan, will be an approved, comprehensive document that allows a project team to begin and complete the work necessary to achieve the project goals and objectives. The project plan will address how the project team will manage the project elements. It will provide a high level of confidence in the organization's ability to meet the scope, timing, cost, and quality requirements by addressing all aspects of the project.

Planning processes activities are illustrated in figure 6.

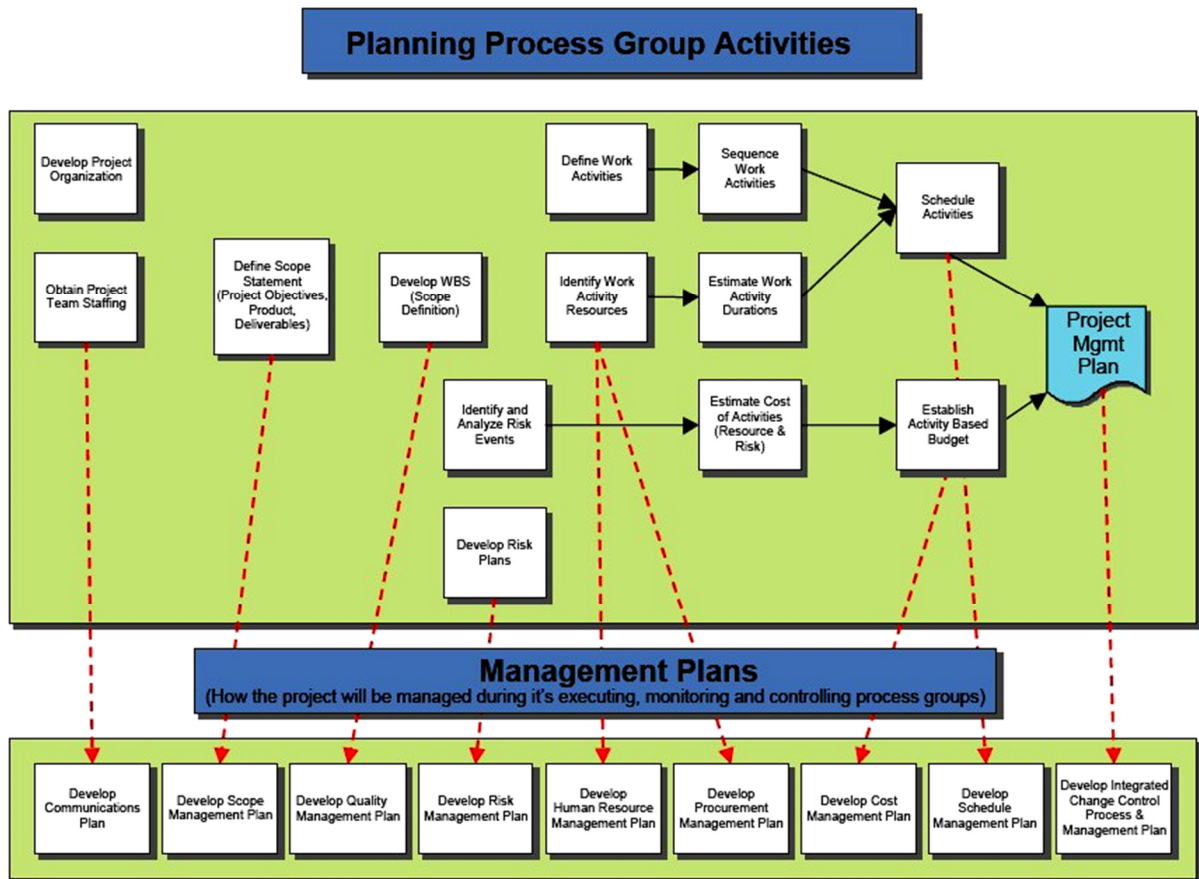


Figure 6: planning process group activities

C. Executing

Execution consists of the processes used to complete the work defined in the project management plan to accomplish the project's requirements. This stage involves coordinating people and resources, as well as integrating and performing the activities of the project in accordance with the project management plan. The deliverables are produced as outputs from the processes performed as defined in the project management plan.

International Association Of Certified Practicing Engineers	PROJECT MANAGEMENT CPE TRAINING MODULE	Page 21 of 84
		Rev: 01
		July, 2014

The following figure is processes which includes in this stage.

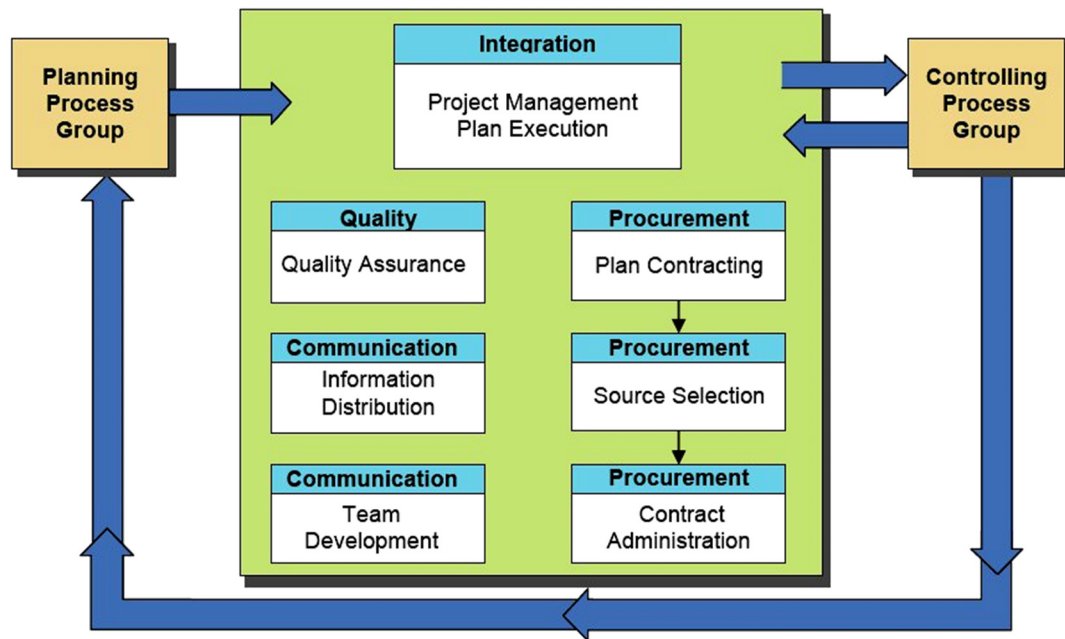


Figure 7 : executing processes

D. Controlling

Controlling stage purposes to observe project execution so that potential problems can be identified in a timely manner and corrective action can be taken, when necessary, to control the execution of the project. In this stage, project managers will compare project status and progress to the actual plan, as resources perform the scheduled work.

There are four major activities which includes in this stage:

- a. Measuring the ongoing project activities;
- b. Monitoring the project variables (cost, effort, scope, etc.) against the project management plan and the project performance baseline;
- c. Identify corrective actions to address issues and risks properly;
- d. Influencing the factors that could circumvent integrated change control so only approved changes are implemented

International Association Of Certified Practicing Engineers	PROJECT MANAGEMENT CPE TRAINING MODULE	Page 22 of 84
		Rev: 01
		July, 2014

During this stage, project managers may need to adjust schedules or do what is necessary to keep the project on track.

E. Closing

Project closeout is performed after all defined project objectives have been met and the customer has formally accepted the project's deliverables and end product or, in some instances, when a project has been cancelled or terminated early. Although, project closeout is a routine process, it is an important one. By properly completing the project closeout, organizations can benefit from lessons learned and information compiled. The project closeout phase is comprised of contract closeout and administrative closure. This stage consists of:

- Project close, that means to finalise all activities across all of the process groups to formally close the project or a project phase.
- Contract closure, that means to complete and settle each contract and close each contract applicable to the project or project phase.